



Keegan White
ESTATE AGENTS

34 Ashtree Walk | Hazlemere | £315,000



Features

- No Onward Chain
- 2 Double Bedrooms
- 939 Year Lease
- Large Lounge/Diner
- Garage
- Communal Gardens

Offered with no onward chain, this first floor maisonette is located on the popular residential development of Manor Farm and boasts light and airy spacious accommodation.

Accessed via an external staircase, the maisonette's private front door opens into an entrance lobby with built in storage cupboard and a door leading to a 'T' shaped sitting/dining room which is dual aspect. Just off the lounge there is a kitchen fitted with gloss white wall and base units with integrated oven, electric hob and extractor fan and space for; dishwasher,

washing machine and fridge/freezer. The inner hallway then takes you through to two double bedrooms and shower room fitted with a white suite.

Outside there are well kept communal gardens with pathways and steps leading to your private entrance, and situated to the rear of the maisonette there is a private single garage with light and power which comes with the purchase of this unusually spacious home.



Keegan White
ESTATE AGENTS

Ashtree Walk is situated just south east of Hazlemere crossroads off of Wellfield, the area offers a surprising range of facilities rarely found in a Chiltern Village. There are three parades of shops offering a range of stores and the closest of which offers a small supermarket for convenience and pharmacy. Leisure facilities include restaurants, sports facilities and a golf club. Hazlemere also offers schooling for children of all ages and is within the catchment area for boys and girls grammar schools which are a short bus ride away. The towns of High Wycombe and Amersham are approximately three miles away in opposing directions and both offer rail links into London.

Property information to be verified by a solicitor:

EPC rating: D (61)

Council tax band: C

Remaining Lease: 939 years

Service Charge: £270 per annum

Ground Rent: £5 per annum.



Keegan White
ESTATE AGENTS

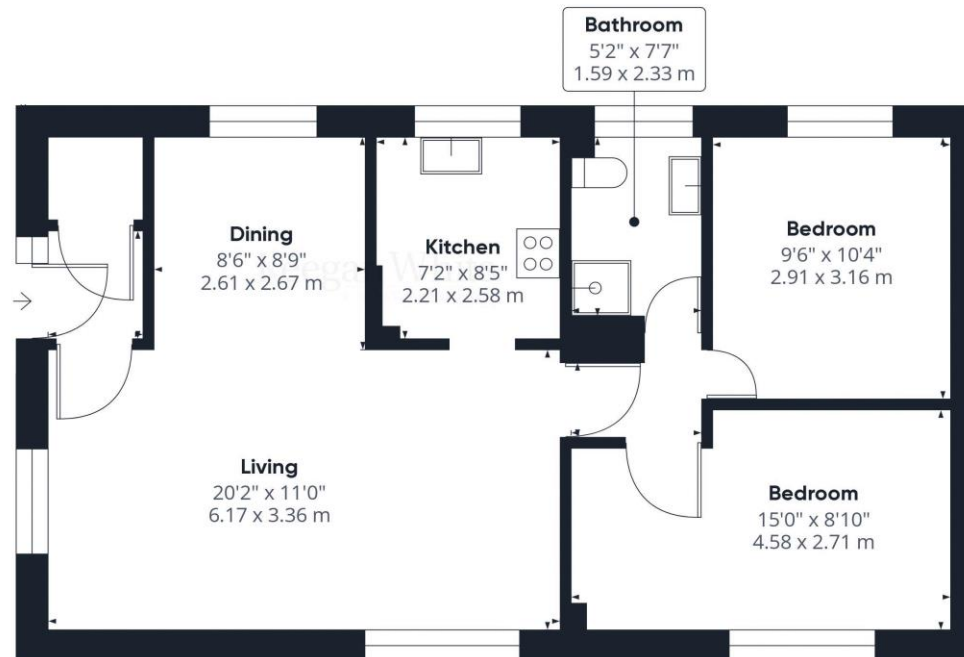


Keegan White
ESTATE AGENTS



Keegan White
ESTATE AGENTS

Keegan White
ESTATE AGENTS



Approximate total area⁽¹⁾
696.19 ft²
64.68 m²

(1) Excluding balconies and terraces

While every attempt has been made to ensure accuracy, all measurements are approximate, not to scale. This floor plan is for illustrative purposes only.

GIRAFFE360

These particulars are not an offer or contract, nor part of one. You should not rely on statements by Keegan White Ltd. in the particulars or by word of mouth or in writing as being factually accurate about the property, its condition or its value. Keegan White Ltd. has no authority to make any representations about the property, and accordingly any information given is entirely without responsibility on the part of the agents, seller(s) or lessor(s). The photographs show only certain parts of the property as they appeared at the time they were taken. Areas, measurements and distances given are approximate only. Any reference to alterations to, or use of, any part of the property does not mean that any necessary planning, building regulations or other consent has been obtained. A buyer or lessee must find out by inspection or in other ways that these matters have been properly dealt with and that all information is correct. Keegan White Ltd. is a limited company registered in England & Wales with company number 9726292. Our registered office is 102-104 High Street, Great Missenden, Bucks, HP16 0BE

33-35 Crendon Street, High Wycombe, Buckinghamshire HP13 6LJ

Tel: 01494 417007

Email: wyc@keeganwhite.co.uk

keeganwhite.co.uk